

Tube (crossbeam)

## SXT-RT 40x3012 AL



Art.-Nr.: 26.07.01.00443

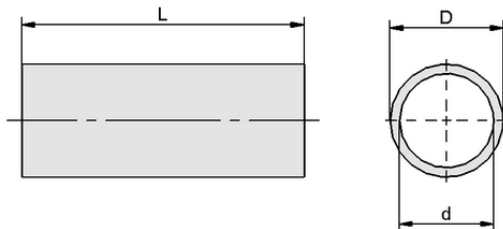


### Technical data

Attribute	Value
Material	Aluminum
Length L	3,012.00 mm
Outside diameter D	40.00 mm

SXT-RT 40x3012 AL

The pipes SXT-RT are delivered in the required length.



### Design data

Attribute	Value
Length L	3,012.00 mm
Outside diameter D	40.00 mm
Internal diameter d	28.00 mm

Design data SXT-RT 40x3012 AL



### Technical data

Attribute	Value
Weight	5,190.0 g
Material	Aluminum
Product family	SXT

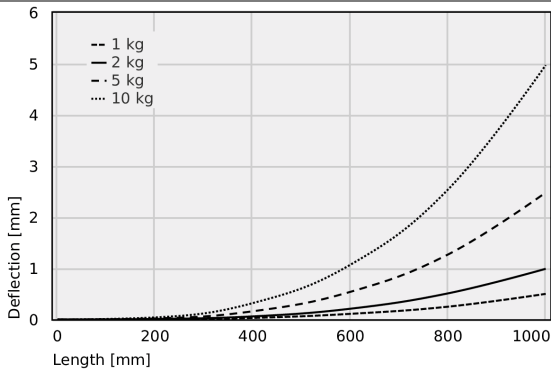


[WWW.SCHMALZ.COM/26.07.01.00443](http://WWW.SCHMALZ.COM/26.07.01.00443)

Art.-Nr.: 26.07.01.00443



## Performance data



Deflection pipes 40 x 6 mm



## Deflection pipes 40 x 6 mm

	0	200	400	600	800	1000
1 kg	0.00	0.00	0.03	0.11	0.25	0.50
2 kg	0.00	0.01	0.06	0.21	0.51	0.99
5 kg	0.00	0.02	0.16	0.54	1.27	2.48
10 kg	0.00	0.04	0.32	1.07	2.54	4.97



## Further documentation

CAD data and other documents relating to the article can be found at: [www.schmalz.com/26.07.01.00443](http://www.schmalz.com/26.07.01.00443)

